



President's Council of Advisors on Science and Technology

Nat Ford

CEO, Jacksonville Transportation Authority



Introduction to JTA



JACKSONVILLE TRANSPORTATION AUTHORITY

- State Agency (7-Member Board)
- Independent Special District

- Expressway Authority (1955)
 - Roads, Bridges, Complete Streets
 - Transit-Oriented Development
- Public Transportation (1971)
 - Fixed Route, BRT, Automated Elevated People Mover, Ferry, Alternative Services
 - 875 sq mi service territory



JTA's Mission: to enhance Northeast Florida's economy, environment, and quality of life for all by providing safe, reliable, innovative, sustainable, and dignified mobility solutions and facilities



"Wellness on Wheels" Partnerships



Economic Impact through Transportation



Worldwide Thought Leadership



Regional Mobility and TOD



Owner's Meeting with Vendor CEOs



MOVE2027: Overview of Initiatives

MOBILITY OPTIMIZATION THROUGH VISION AND EXCELLENCE



Implements strategies to make JTA a **more resilient and agile organization**



Focuses on **improving and expanding JTA's fixed-route and on-demand transit services** to respond to evolving customer needs



Develops multi-modal services and **infrastructure for a safer and more livable region**



Enhances the customer experience and **makes JTA services easier to use** through investments in customer communications and tech



Leverages JTA's role as a mobility integrator to **create a more seamless transportation network across Northeast Florida**



Continues JTA's leadership in transportation innovation through the **implementation of AV technology and sustainability investments**



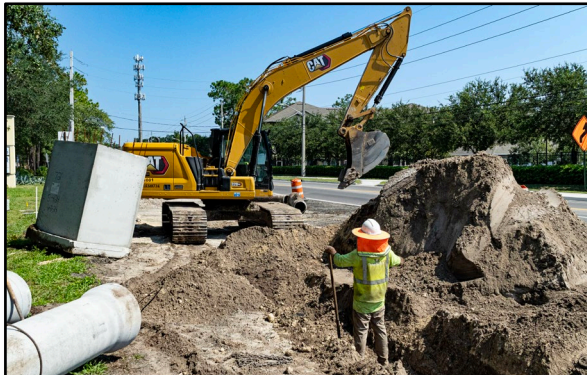
Leverages JTA's assets to **support our community and strengthen Northeast Florida**

- The outcome of the MOVE2027 Plan is **seven strategic initiatives**—business actions, projects, and programs grouped and aligned by key categories to achieve JTA's visions and goals over the next five years, each uniquely tied to JTA's daily activities.
- The seven initiatives have a common aim: to provide seamless mobility solutions for JTA customers. Each initiative has several related strategies and tactics.



Capital Projects

- **Vision Zero/Creating Safe Spaces Action Plan: [VISION 4 ERONETWORK](#)**
 - Providing a safe environment for our communities to grow, for **quality of life** to flourish
- **JTA MobilityWorks:**
 - Consisting of 27 mobility projects handed to the JTA by the City in 2014
 - **14 Capital Projects** and **13 Road Corridors**, that will be completed 2 full years ahead of schedule



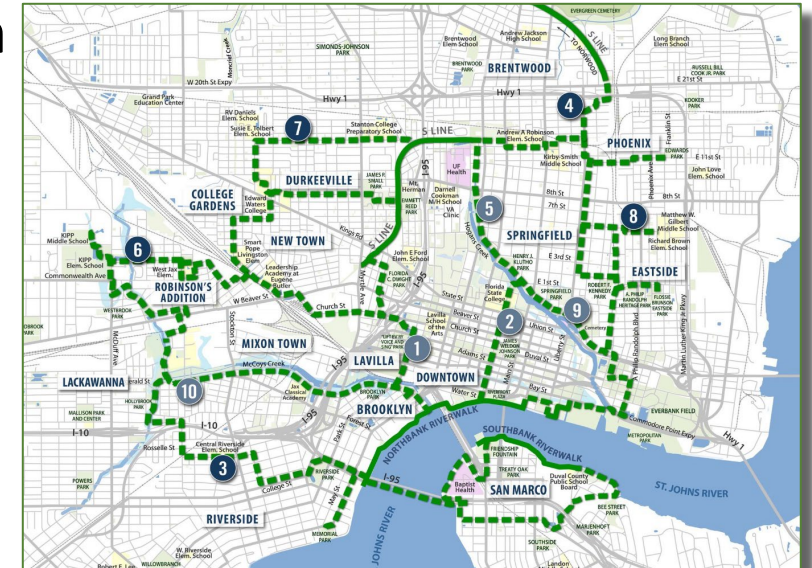
- **The NW Corridor Improvement Project:**
 - A series of major upgrades and enhancements to **111 bus stops** around the Northwest Jacksonville neighborhoods



Emerald Trail

Five Emerald Trail Segments will be delivered by the JTA in partnership with the City Of Jacksonville and Groundwork Jacksonville as part of the MobilityWorks 2.0 Program

- Segment #3 – Southwest Connector: 2.3 Miles
- Segment #4 – S-Line Connector: 1.3 Miles
- Segment #6 – Westside Connector: 4.1 Miles
- Segment #7 – Northwest Connector: 3.5 Miles
- Segment #8 – Eastside Connector: 3.7 Miles



The Emerald Trail is a 30-mile network of bicycle and pedestrian trails, connecting downtown to 14 historic neighborhoods, 18 schools, 3 hospitals, 2 colleges and nearly 30 parks

Delivering projects on-time and on-budget

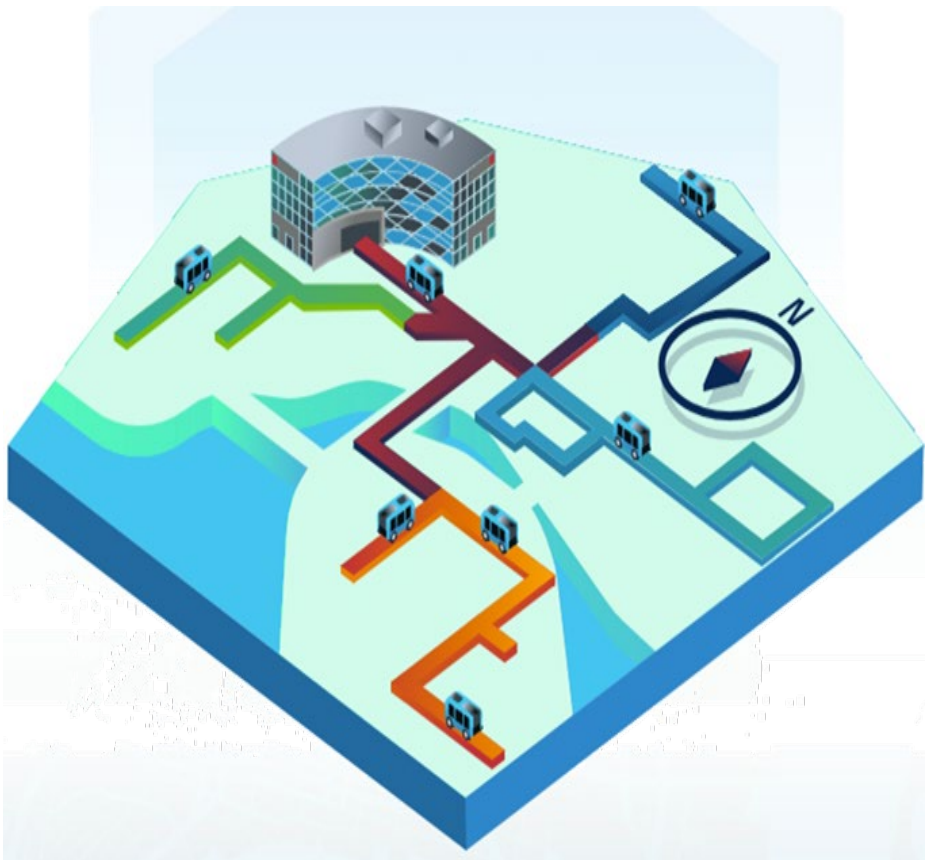
- Over \$350 million received in state & federal discretionary funding
- Received record-breaking **\$147 million grant**, the **largest single federal grant in Jacksonville’s history** and the largest amount given in USDOT’s FY23 Neighborhood Access and Equity Grant





Introduction to U²C: Project Phases

Project Phases



1

PHASE 1

- Bay Street is a critical artery connecting residential areas, through the urban business core to the entertainment and sports district on the east edge of Downtown
- Along the route, AVs will make stops at designated locations to allow passengers to enter and exit the AVs as needed; later phases of the U²C program are also expected to utilize interoperable technology to deliver an integrated AV network connection in Downtown Jacksonville and surrounding neighborhoods
- Phase II: Construction Commencement (Mar-2024)
- Phase III: O&M of BSIC Commencement (June 2025)

2

PHASE 2

- Phase 2, which will be funded through LOGT, represents the full conversion of the existing Skyway Superstructure and eight stations into an elevated roadway for AVs. The current bi-directional tracks run approximately 2.5 miles in each direction launching from the JRTC
- Phase 2 also includes the street-level connection to Phase 1, the Bay Street Innovation Corridor, and an O&M facility for AVs in the LaVilla neighborhood
- LOGT Dedicated Funding Skyway Reb & Expansion: (i) Infrastructure, System: \$240,075,000, (ii) Fleet: \$6,765,000 (**fully funded**)

3

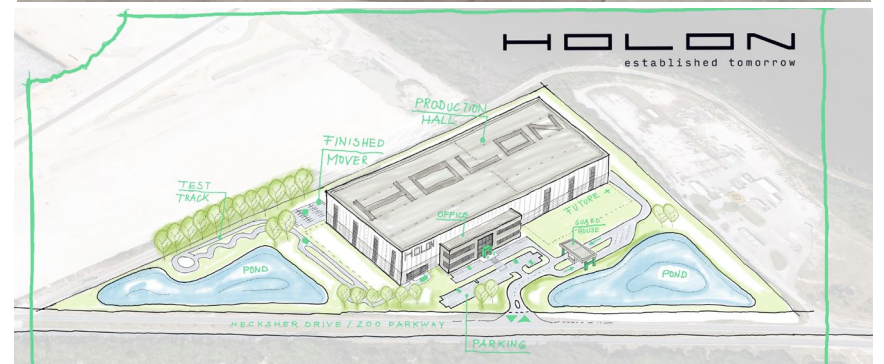
PHASE 3

- JTA continues to advance the design of the Bay Street Innovation Corridor
- A Transit Concepts and Alternatives Review (TCAR) planning exercise was completed in March 2020 that identified alternatives for each of the Skyway corridor extensions including:
 - **Southwest Corridor**
 - **Southbank Corridor**
 - **North Corridor**
- JTA was awarded a RAISE Planning Grant from the U.S. DOT, which will advance the planning, environmental review and permitting, and preliminary project development activities for four Urban Circulator routes
- Planned Completion: 2026



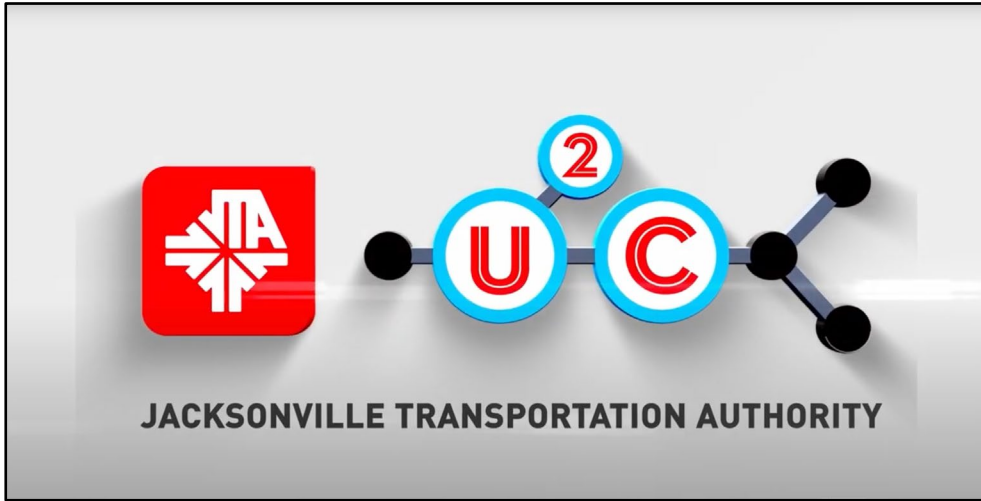
HOLON to Establish New AV Facility in Jacksonville

- Just last week, HOLON—subsidiary of the BENTELER Group and a leader in automotive technology—announced that the company will **establish a new \$100 million autonomous shuttle manufacturing facility in the City of Jacksonville**
- Buy America Compliant
- \$100 Million Economic Investment
- Workforce Development: Cultivate Workforce of The Future
- Educational Development (STEM)





Conclusion



scan to learn more



scan to learn more